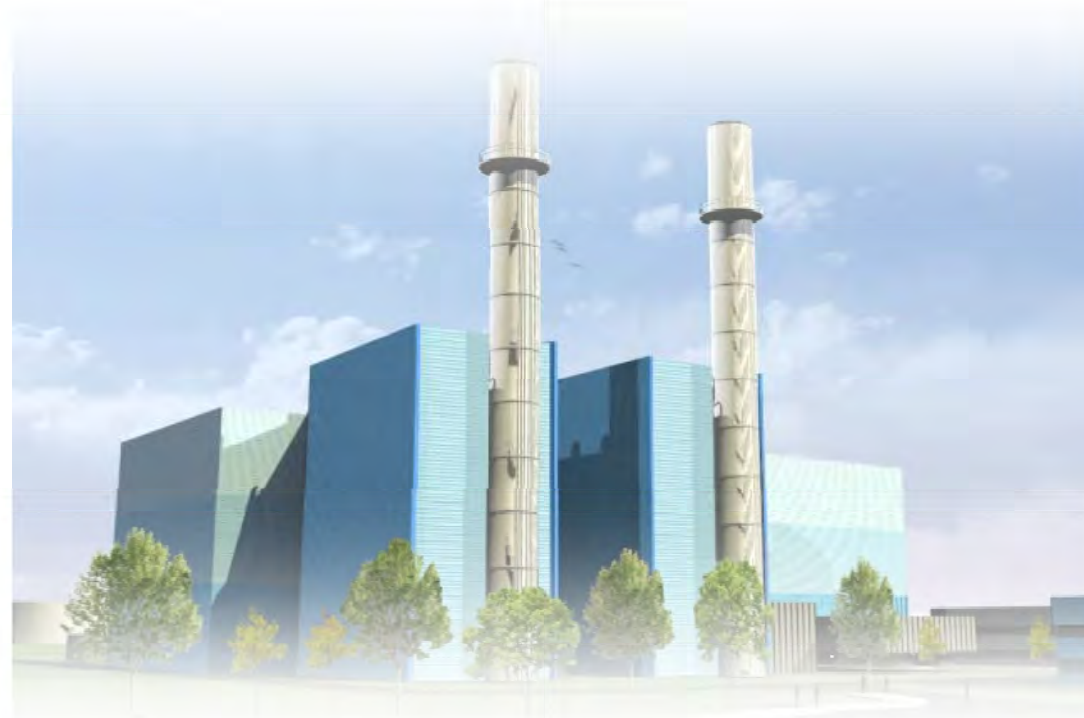




## Gateway Energy Centre



### **ENVIRONMENTAL STATEMENT** Further Information Document – Figures

Prepared by



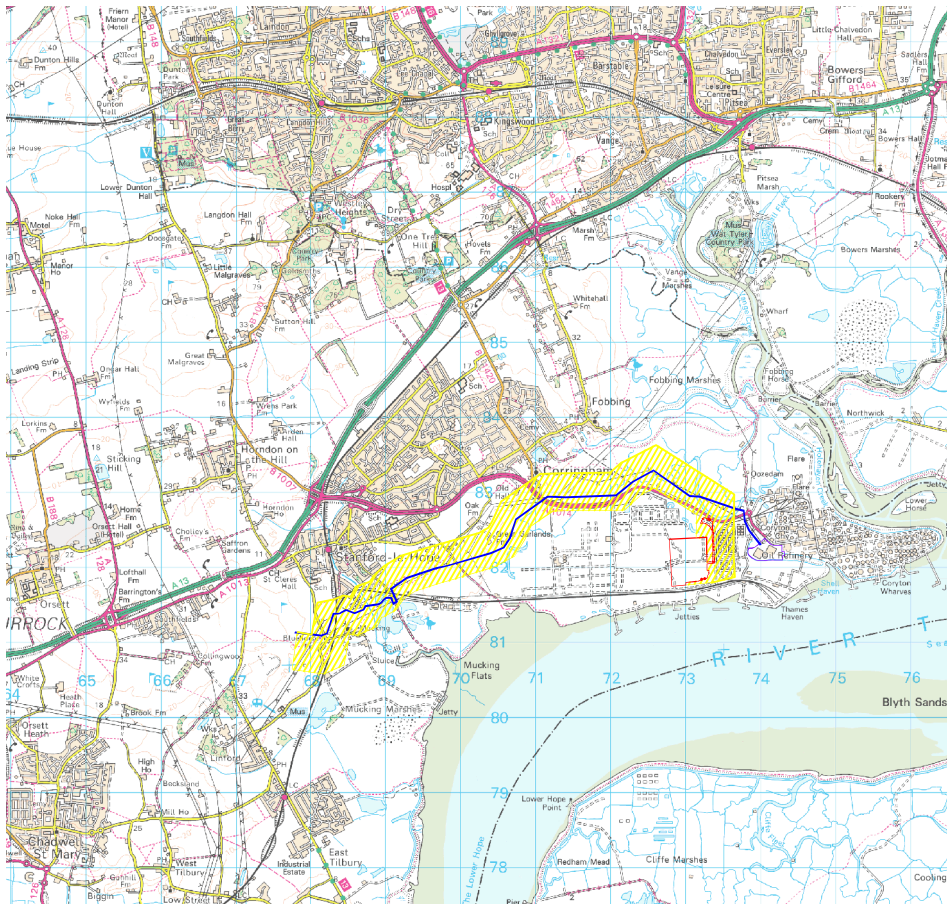
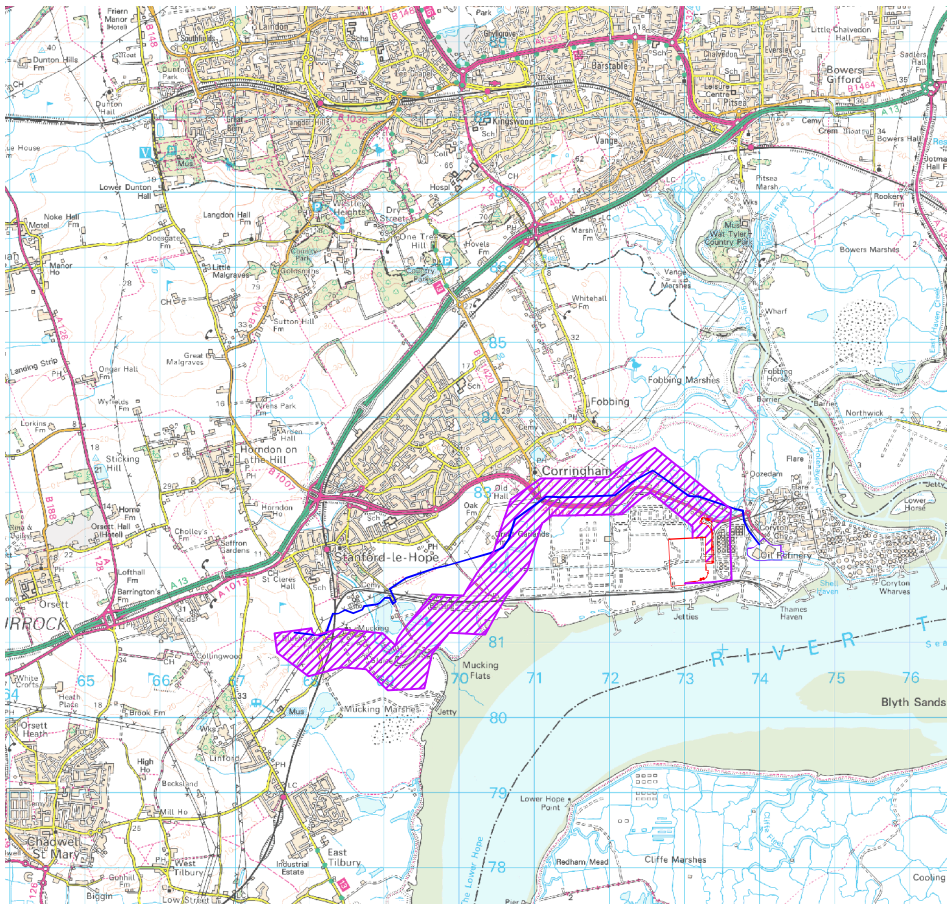
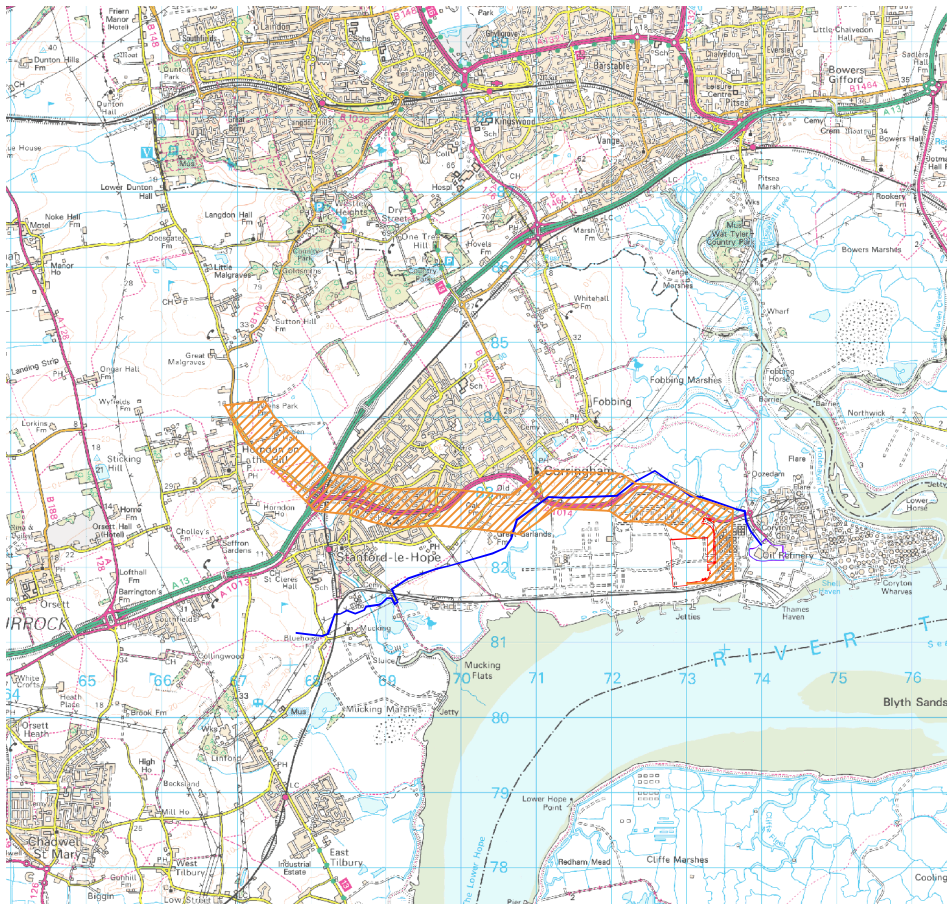
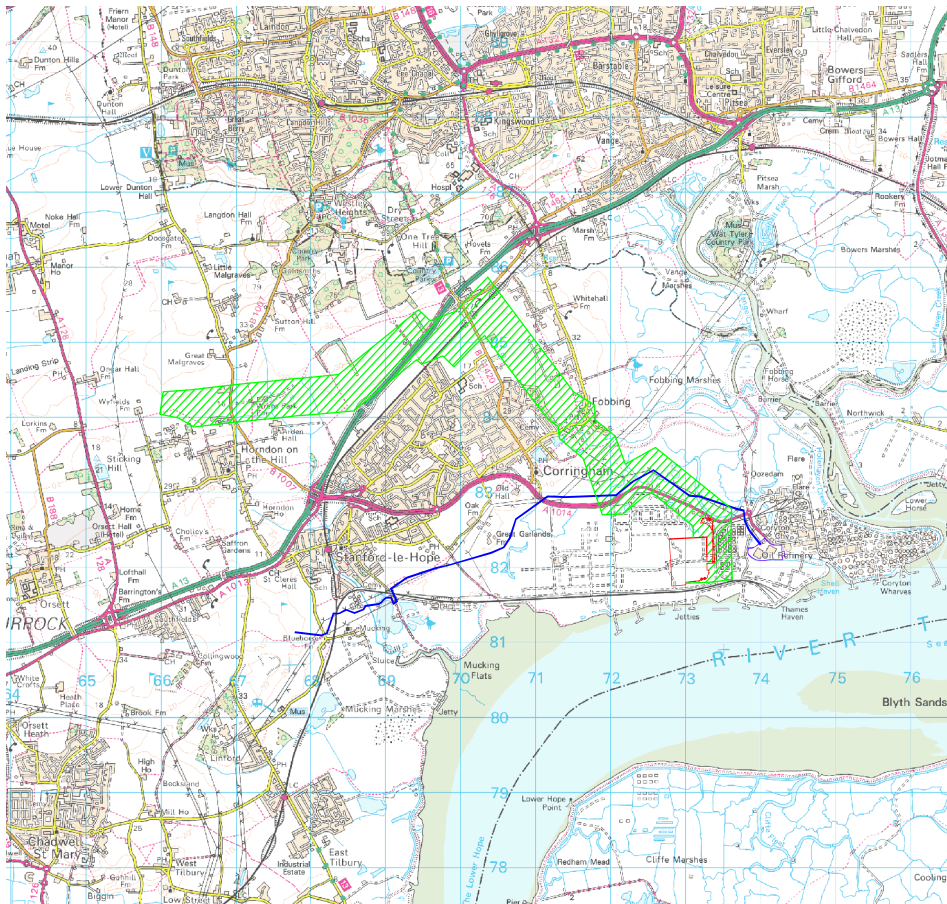
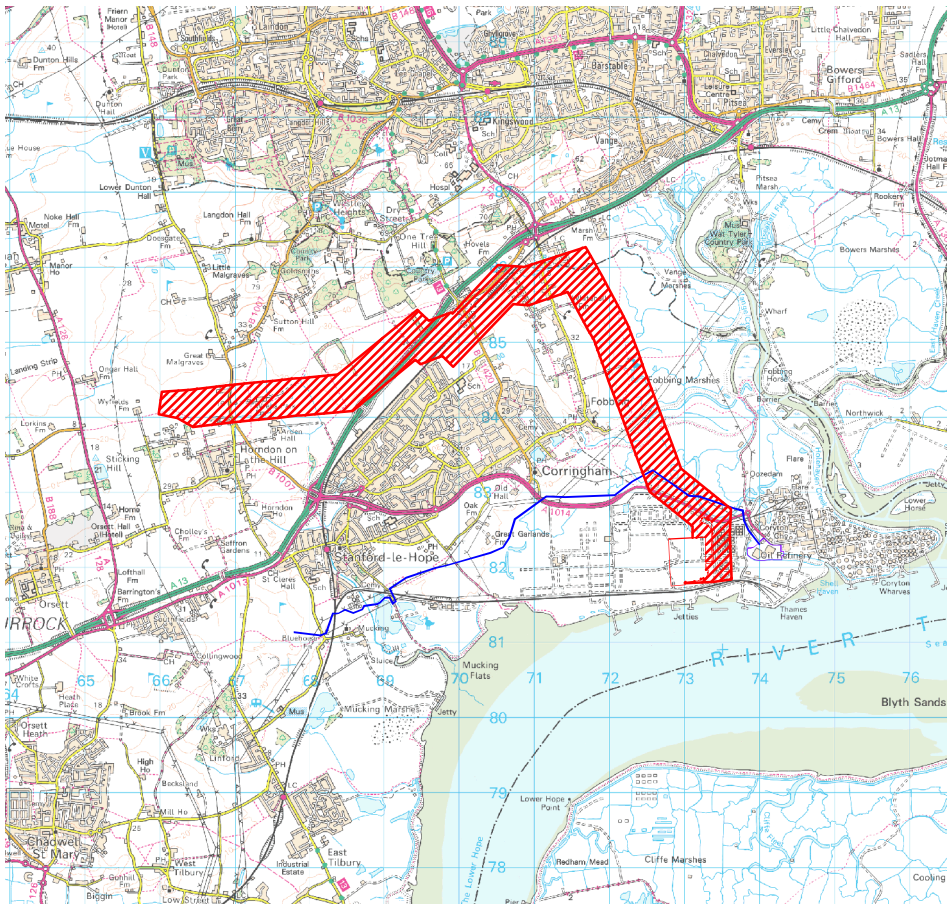
December 2010

**CONTENTS**

<b>Figure</b>	<b>Title</b>
6.1	Potential Gas Pipeline Route Corridor
11.1	Viewpoint 1: Oozedam Country Road (GEC and the LG Development)
11.2	Viewpoint 2: Road Bridge on the Canvey Way (A130) (GEC and the LG Development)
11.3	Viewpoint 3: Hadleigh Castle (GEC and the LG Development)
11.4	Viewpoint 4: Swigshole (GEC and the LG Development)
11.5	Viewpoint 5: Northward Hill (Corner of Cooling Road and Wybournes Lane) (GEC and the LG Development)
11.6	Viewpoint 6: Cooling (GEC and the LG Development)
11.7	Viewpoint 7: Cliffe Marshes Northern border with Thames (GEC and the LG Development)
11.8	Viewpoint 8: East Tilbury – Coalhouse Fort (GEC and the LG Development)
11.9	Viewpoint 9: Oak Farm (GEC and the LG Development)
11.10	Viewpoint 10: Wat Tyler Country Park (GEC and the LG Development)
11.11	ZTV Analysis (Bare Earth) Proposed GEC Stacks 75 m
11.12	ZTV Analysis (Bare Earth) Proposed Main Buildings 42 m
11.13	ZTV Analysis (With LG Screening) Proposed GEC Stacks 75 m
11.14	ZTV Analysis (With LG Screening) Proposed Main Buildings 42 m
11.15	Location of Additional Viewpoints
11.16	Viewpoint A: Coalhouse Fort - Showing GEC Only
11.17	Viewpoint B: Horndon on the Hill - Showing GEC Only
11.18	Viewpoint C: Langdon Hills Country Park - Showing GEC Only
11.19	Viewpoint D Fobbing - Showing GEC Only
11.20	Viewpoint A: Coalhouse Fort - Showing GEC and LG Development

11.21	Viewpoint B: Horndon on the Hill - Showing GEC and LG Development
11.22	Viewpoint C: Langdon Hills Country Park - Showing GEC and LG Development
11.23	Viewpoint D Fobbing - Showing GEC and LG Development





	EXISTING PIPELINE
	POSSIBLE ROUTE 1
	POSSIBLE ROUTE 2
	POSSIBLE ROUTE 3
	POSSIBLE ROUTE 4
	POSSIBLE ROUTE 5

BASED ON 2009 ORDNANCE SURVEY DIGITAL DATA WITH THE PERMISSION OF HER MAJESTY'S STATIONERY OFFICE ©CROWN COPYRIGHT

Rev	Date	Description	By	Chk	App	Notes
-----	------	-------------	----	-----	-----	-------

Amber Court  
William Armstrong Drive  
Newcastle upon Tyne NE4 7YQ

Tel: 44-(0)191-226-2000  
Fax: 44-(0)191-226-2104

Client:

INTERGEN

Project:

GATEWAY ENERGY CENTRE

Title:

POTENTIAL GAS PIPELINE  
ROUTE CORRIDOR

Drawn: DD	Checked: EA
Designed: DD	Approved: EA
Date: 19/08/2010	Scale: NTS A3 Sheet:
Project Number:	Drawing Number:
Revision:	
FIGURE 6.1	
© Copyright Parsons Brinckerhoff	



EXISTING VIEWPHOTOMONTAGE

## GATEWAY ENERGY CENTRE

Viewpoint 1  
Oozedam Country Road (GEC and the LG Development)



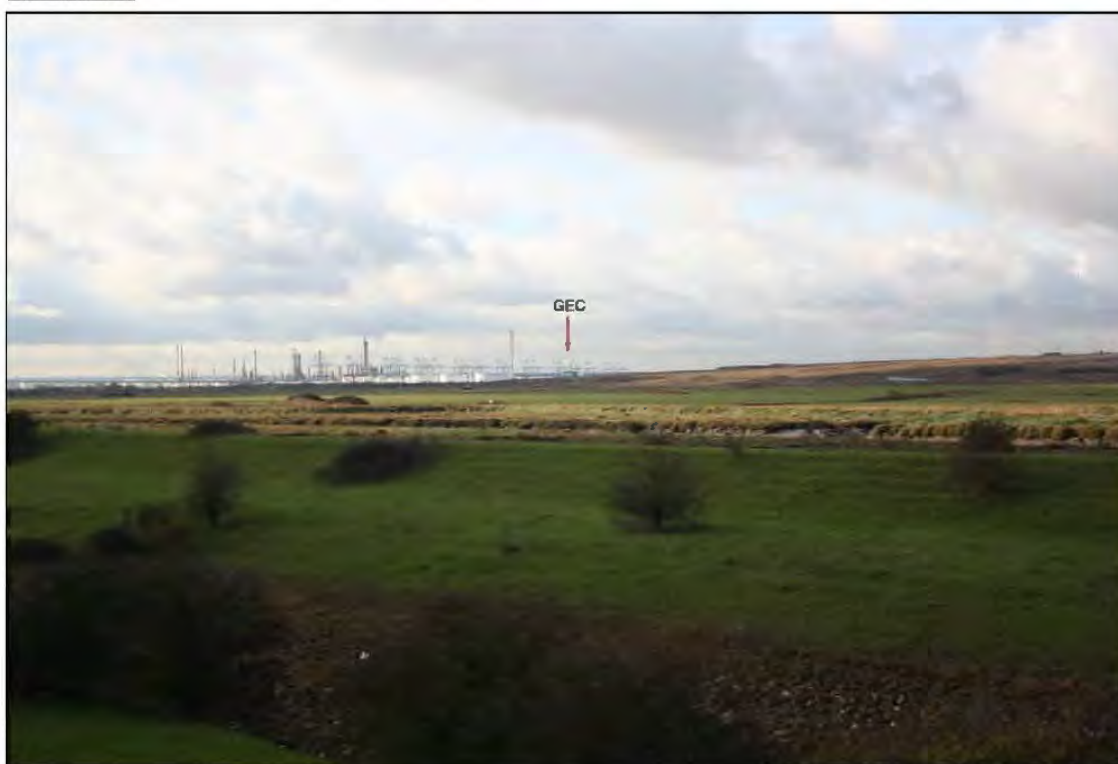
Drawn: PDO  
Checked: EA  
Approved: MW  
Date: 19.08.2010

Scale: NTS

Drawing No.

FIGURE 11.1

Rev.  
1

EXISTING VIEWPHOTOMONTAGE

## GATEWAY ENERGY CENTRE



Viewpoint 2 – Road Bridge on the  
Canvey Way (A130) (GEC and the LG Development)

Drawn: PDO  
Checked: EA  
Approved: MW  
Date: 19.08.2010

Scale: NTS

Drawing No.

FIGURE 11.2

Rev.  
1



EXISTING VIEWPHOTOMONTAGE

## GATEWAY ENERGY CENTRE



Drawn: PDD  
 Checked: EA  
 Approved: MW  
 Date: 19.08.2010

Scale: NTS

Drawing No.

FIGURE 11.3

Rev.  
 1

Viewpoint 3  
 Hadleigh Castle (GEC and the LG Development)

EXISTING VIEWPHOTOMONTAGE

## GATEWAY ENERGY CENTRE



Viewpoint 4  
Swigshole (GEC and the LG Development)

Drawn: PDD  
Checked: EA  
Approved: MW  
Date: 19.08.2010

Scale: NTS

Drawing No.

FIGURE 11.4

Rev.  
1



EXISTING VIEW



PHOTOMONTAGE



## GATEWAY ENERGY CENTRE



Viewpoint 5 – Northward Hill (Corner of Cooling Road and Wybournes Lane) (GEC and the LG Development)

Drawn: PDO  
Checked: EA  
Approved: MW  
Date: 19.08.2010

Scale: NTS

Drawing No.

FIGURE 11.5

Rev.  
1

EXISTING VIEW



PHOTOMONTAGE



## GATEWAY ENERGY CENTRE

Viewpoint 6  
Cooling (GEC and the LG Development)



Drawn: PDO  
Checked: EA  
Approved: MW  
Date: 19.08.2010

Scale: NTS

Drawing No.

FIGURE 11.6

Rev.  
1



EXISTING VIEWPHOTOMONTAGE

## GATEWAY ENERGY CENTRE

Viewpoint 7—Cliffe Marshes Northern  
border with Thames (GEC and the LG Development)



Drawn: PDO  
Checked: EA  
Approved: MW  
Date: 19.08.2010

Scale: NTS

Drawing No.

FIGURE 11.7

Rev.  
1

EXISTING VIEW



PHOTOMONTAGE



## GATEWAY ENERGY CENTRE



Viewpoint 8–East Tilbury  
Coalhouse Fort (GEC and the LG Development)

Drawn: PDO  
Checked: EA  
Approved: MW  
Date: 19.08.2010

Scale: NTS

Drawing No.

FIGURE 11.8

Rev.  
1



EXISTING VIEWPHOTOMONTAGE

## GATEWAY ENERGY CENTRE

Viewpoint 9  
Oak Farm (GEC and the LG Development)



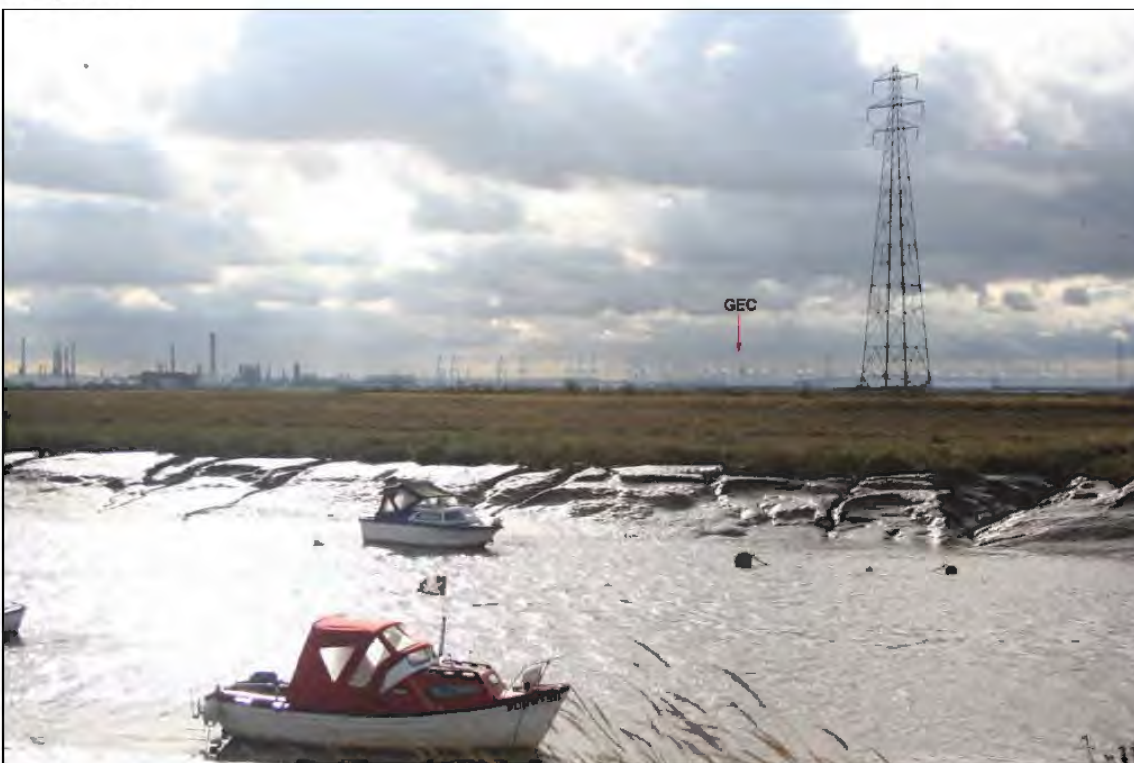
Drawn: PDO  
Checked: EA  
Approved: MW  
Date: 19.08.2010

Scale: NTS

Drawing No.

FIGURE 11.9

Rev.  
1

EXISTING VIEWPHOTOMONTAGE

GATEWAY ENERGY CENTRE



Viewpoint 10  
Wat Tyler Country Park (GEC and the LG Development)

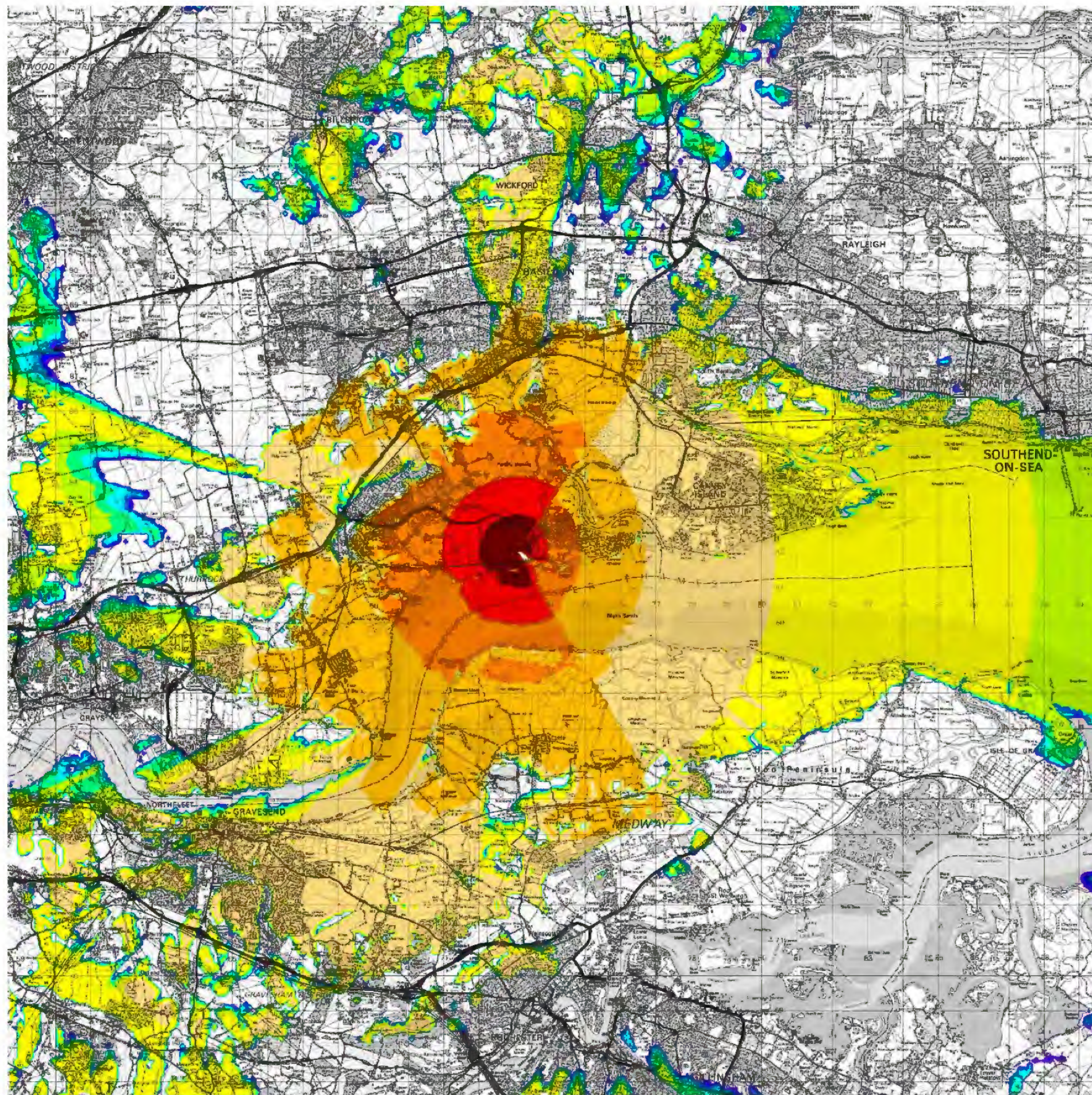
Drawn: PDO  
Checked: EA  
Approved: MW  
Date: 19.08.2010

Scale: NTS

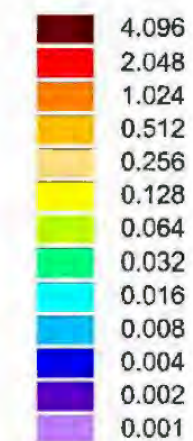
Drawing No.  
FIGURE 11.10

Rev.  
1





VERTICAL SUBTENDED ANGLE



NORTH



BASED ON 2009 ORDNANCE SURVEY DIGITAL DATA WITH THE PERMISSION OF HER MAJESTY'S STATIONERY OFFICE © CROWN COPYRIGHT

GATEWAY ENERGY CENTRE

ZTV ANALYSIS (BARE EARTH)  
PROPOSED GEC STACKS 75M

Drawing Number

FIGURE 11.11

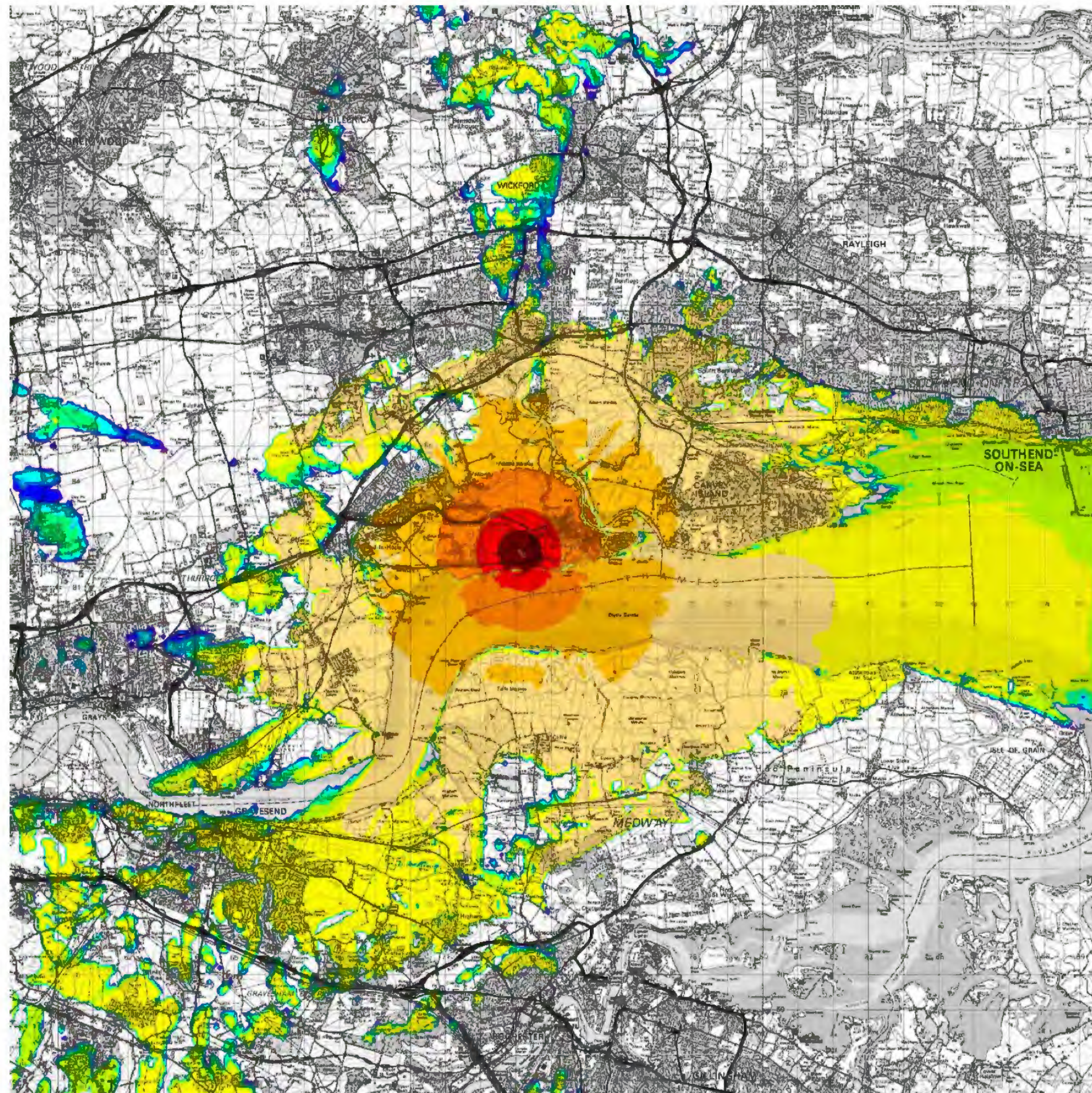
Drawn: PDO  
Checked: EA  
Approved: MW  
Date: 19.08.2010



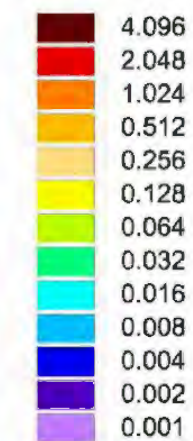
© Copyright Parsons Brinckerhoff

CAD FILE REF:-





VERTICAL SUBTENDED ANGLE



NORTH



BASED ON 2009 ORDNANCE SURVEY DIGITAL DATA WITH THE PERMISSION OF HER MAJESTY'S STATIONERY OFFICE © CROWN COPYRIGHT

GATEWAY ENERGY CENTRE

ZTV ANALYSIS (BARE EARTH)  
PROPOSED MAIN BUILDINGS 42M

Drawing Number

FIGURE 11.12

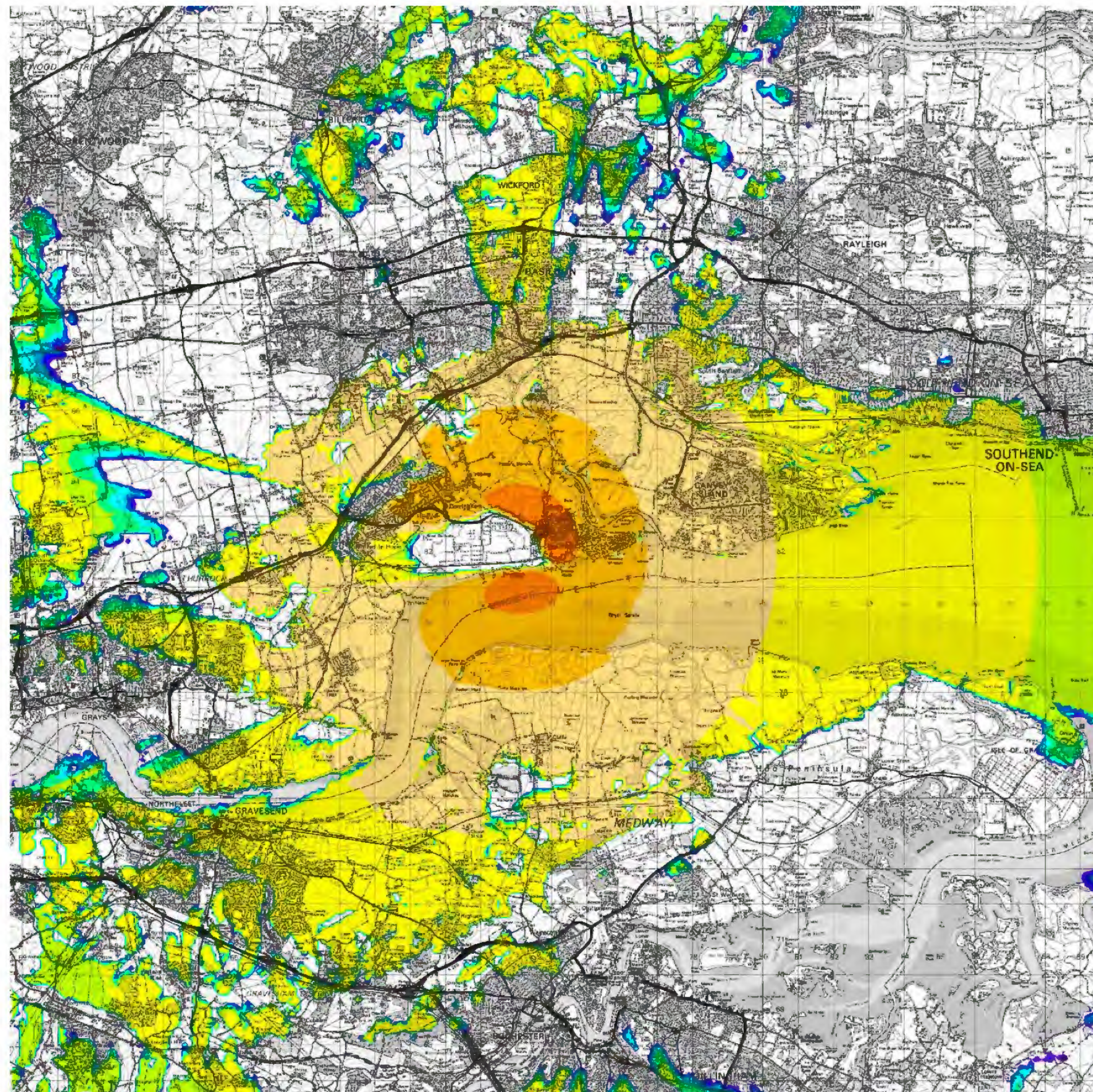
Drawn: PDC  
Checked: EA  
Approved: MW  
Date: 19.08.2010



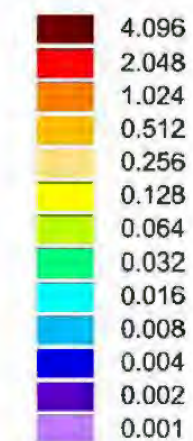
© Copyright Parsons Brinckerhoff

CAD FILE REF:-





VERTICAL SUBTENDED ANGLE



NORTH



BASED ON 2009 ORDNANCE SURVEY DIGITAL DATA WITH THE PERMISSION OF HER MAJESTY'S STATIONERY OFFICE © CROWN COPYRIGHT

GATEWAY ENERGY CENTRE

ZTV ANALYSIS (WITH LG SCREENING)  
PROPOSED GEC STACKS 75M

Drawing Number

FIGURE 11.13

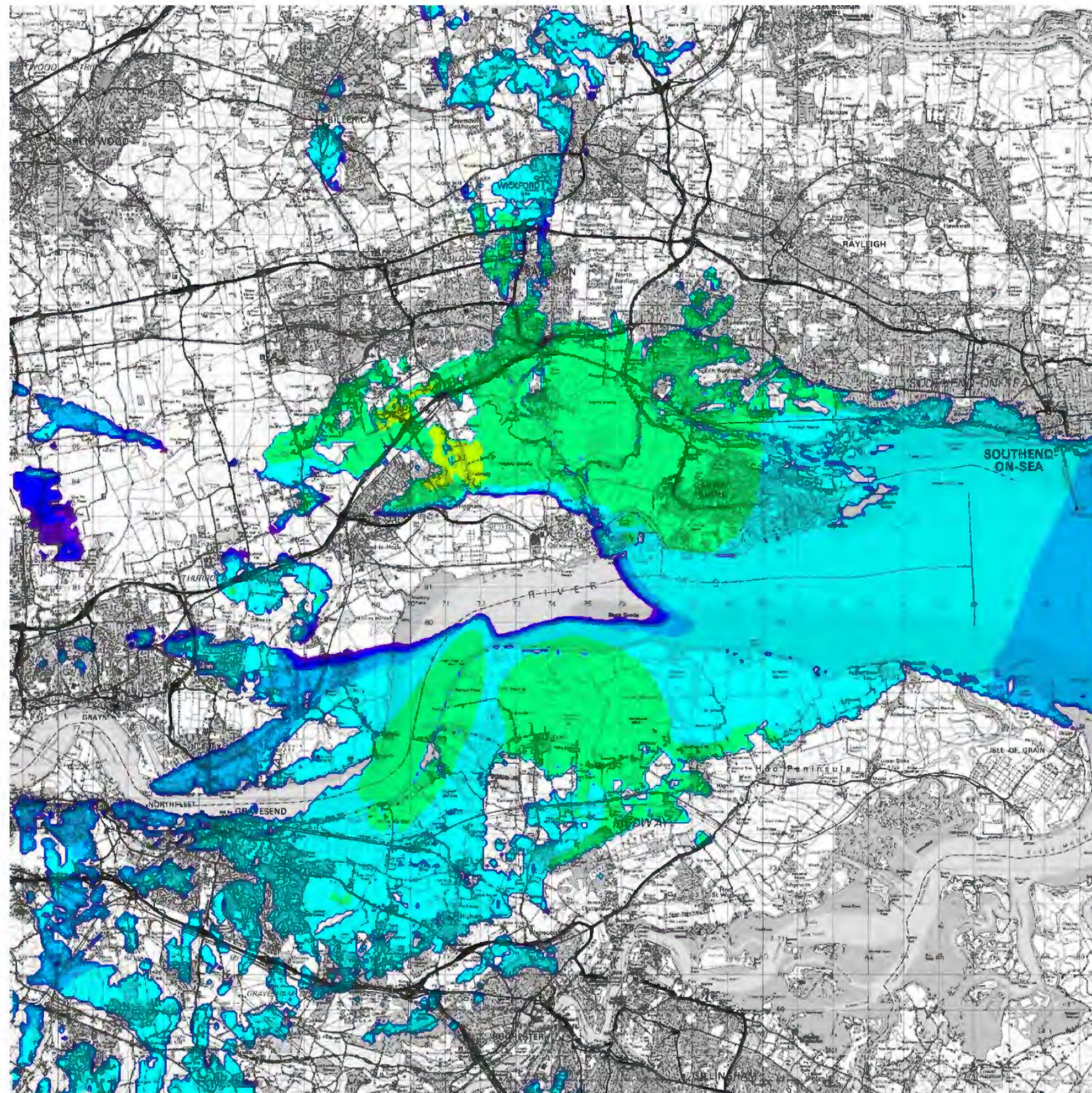
Drawn: PDO  
Checked: EA  
Approved: MW  
Date: 19.08.2010



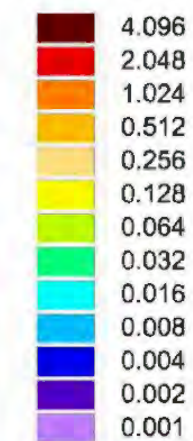
© Copyright Parsons Brinckerhoff

CAD FILE REF:-





VERTICAL SUBTENDED ANGLE



NORTH



BASED ON 2009 ORDNANCE SURVEY DIGITAL DATA WITH THE PERMISSION OF HER MAJESTY'S STATIONERY OFFICE © CROWN COPYRIGHT

GATEWAY ENERGY CENTRE

ZTV ANALYSIS (WITH LG SCREENING)  
PROPOSED MAIN BUILDINGS 42M

Drawing Number

FIGURE 11.14

Drawn: PDC  
Checked: EA  
Approved: MW  
Date: 19.08.2010



© Copyright Parsons Brinckerhoff

CAD FILE REF:-